



DESIGNING AND DELIVERING
A SUSTAINABLE FUTURE

APPENDIX 13

LANDSCAPE AND VISUAL

Appendix 13.1 – Assessment of Visual Impacts at

Viewshed Reference Points

Appendix 13.2 – Mapping (Zone of Theoretical
Visibility Mapping and Representative Viewpoint

Mapping)

APPENDIX 13.1

Assessment of Visual Impacts at Viewshed Reference Points

VP No.	Existing View	VP Sensitivity	Visual Impact Magnitude	Significance / Quality / Duration of Impact Statement of Significance
VP1	<p>Graveyard at Templemore - This view is representative of those experienced at the Church of the Sacred Heart and associated graveyard and those that would be experienced by residents to varying degrees (subject to intervening vegetation) within and around Templemore. The nearby transport corridors of the N62, R433, and the rail line are also located within 1 km of this viewpoint.</p> <p>Views towards the site are over an open parking area adjacent the graveyard, bounded by stone walls and fencing. A sports field and associated infrastructure are located beyond the graveyard to the south, enclosed by dense sections of hedgerow. Structures within the town are visible throughout the view, along with powerlines and lighting columns.</p> <p>This view is heavily contained, enclosed by the near-stacked vegetation and surrounding dwellings, and is slightly elevated above the adjacent sports field and graveyard.</p>	Medium	<p>Due to intervening vegetation and structures, views of the proposed turbines from this location at a distance of c. 19.1km (T1) would be precluded.</p> <p>This screening effect is likely to continue throughout much of the immediate landscape due to the density of surrounding vegetation. The influence of any visible turbines on the view would be largely moderated by distance, and would likely have no bearing on visual amenity.</p> <p>On balance of the reasons outlined above, the magnitude of visual change is deemed to be Negligible and of a Neutral quality.</p>	<p>Imperceptible / Neutral / Long Term</p> <p>Not-Significant</p>

VP No.	Existing View	VP Sensitivity	Visual Impact Magnitude	Significance / Quality / Duration of Impact Statement of Significance
	<p>The immediate surroundings and the town of Templemore experience a similar degree of visual containment due to the surrounding built development and dense intervening mature vegetation.</p> <p>Views over this settled landscape are not particularly notable. However, they are related to the immediate landscape of residential receptors, and the cemetery has its own cultural and heritage associations.</p>			
VP2	<p>Templetuohy Cemetery - This view is representative of those experienced at the Templetuohy Cemetery, and those that would be experienced by residents to varying degrees (subject to intervening vegetation) within and around Templetuohy.</p> <p>Views towards the site are over a largely flat area of pasture, bounded by low stone walls and sections of hedgerow. In the mid-ground, an area of woodland is visible to the south-east. Residential and farmstead structures, as well as multiple powerlines, are visible throughout the view.</p>	Medium	<p>Fleeting views of the blade sets of one of the proposed turbines would be possible from this location. While substantially screened by the intervening landform and layers of hedgerows, this blade set has the potential to draw the eye; however, it may not be noticeable to a casual observer or passer-by.</p> <p>At a distance of c. 14.6km (T1), and in the context of this view, already heavily influenced by an existing wind farm development, it is not considered that this partial visibility would generate a notable influence on the view, nor notably detract from the sense of visual amenity within this view.</p> <p>From some areas within the wider landscape, there may be glimpse views of some additional blade tips available along the horizon. However, this would likely have no bearing on visual amenity.</p>	<p>Imperceptible / Neutral / Long Term</p> <p>Not-Significant</p>

VP No.	Existing View	VP Sensitivity	Visual Impact Magnitude	Significance / Quality / Duration of Impact Statement of Significance
	<p>Longer range views are generally precluded by intervening vegetation; however, there are partial views of the wider landscape which allow visibility of the existing Lisheen Wind Farm along the horizon.</p> <p>Views over this rural landscape, largely influenced by wind energy development, are not particularly notable. However, they are related to the immediate landscape of residential receptors, and the cemetery has its own cultural and heritage associations.</p>		<p>On balance of the reasons outlined above, the magnitude of visual change is deemed to be Negligible and of a Neutral quality.</p>	
VP3	<p>Johnstown Cemetery - This view is representative of those experienced at the Johnstown Cemetery, those experienced transiently from the R639 regional road, and those that would be experienced by residents to varying degrees (subject to intervening vegetation) within and around Johnstown.</p> <p>Views towards the site are over the largely flat lands of the cemetery, bounded by walls and individual trees and shrubs. Beyond this, views are over a largely flat, broad area of agricultural land, interspersed with sections of hedgerows throughout.</p>	Medium	<p>Fleeting views of the blade sets of four of the proposed turbines would be possible from this location. While substantially screened by layers of intervening hedgerows, these blade sets have the potential to draw the eye; however, they may not be noticeable to a casual observer or passer-by.</p> <p>The proposed turbines will marginally increase the intensity of built development in the view, and will generate a slight sense of visual ambiguity as they are seen rotating behind the intervening vegetation. However, at a distance of c. 10.3km (T1) and in the context of the wider view, it is not considered that this partial visibility would generate a notable influence on the view, nor notably detract from the sense of visual amenity within this view.</p>	<p>Slight-Imperceptible / Negative / Long Term</p> <p>Not-Significant</p>

VP No.	Existing View	VP Sensitivity	Visual Impact Magnitude	Significance / Quality / Duration of Impact Statement of Significance
	<p>Views to the south-west are generally screened by dense intervening vegetation, however there are some partial structures visible. Glimpse views of distant, more elevated areas are available.</p> <p>Views over this rural landscape are not particularly notable. However, they are related to the immediate landscape of residential receptors, and the cemetery has its own cultural and heritage associations.</p>		<p>From some areas within the wider landscape, there may be glimpse views of some additional blade tips available. However, this would likely have no bearing on visual amenity.</p> <p>On balance of the reasons outlined above, the magnitude of visual change is deemed to be Low-negligible and of a Negative quality.</p>	
VP4	<p>Local cemetery at Cooleeny - This view is representative of those experienced at the local cemetery at Cooleeny, and those that would be experienced by residents to varying degrees (subject to intervening vegetation) along the local road.</p> <p>Views towards the site are over the largely flat land of the cemetery, bounded by stone walls. Beyond this, residential and farmstead structures are partially visible along the local road, surrounded by sections of hedging and individual trees. Longer range views are precluded by intervening structures and vegetation. Powerlines are visible throughout the view.</p>	Medium	<p>Due to intervening structures and vegetation, views of the proposed turbines from this location at a distance of c. 8.1km (T1) would be barely discernible aside from potential glimpses of turbine blade tips along the skyline.</p> <p>This screening effect is likely to continue throughout much of the immediate landscape due to the layers of intervening vegetation and clustered structures.</p> <p>On balance of the reasons outlined above, the magnitude of visual change is deemed to be Low-Negligible and of a Negative quality.</p>	<p>Slight-Imperceptible / Negative / Long Term</p> <p>Not-Significant</p>

VP No.	Existing View	VP Sensitivity	Visual Impact Magnitude	Significance / Quality / Duration of Impact Statement of Significance
	Views over this rural landscape are not particularly notable. However, the cemetery has its own cultural and heritage associations. It should be noted that the primary amenity and heritage value of views are associated with the cemetery, located in a direction away from the site.			
VP5	R689 at Urlingford - This view is representative of those experienced transiently from the R689 regional road, and those that would be experienced by residents to varying degrees (subject to intervening vegetation) within and around Urlingford. Views towards the site are over a largely flat private garden bounded by hedging, as well as an area of hedgerow to the west. Beyond this, views are over a largely flat area of pasture interspersed with individual trees and shrubs. In the mid-ground, a residential structure and associated blockwork wall are partially visible to the west, and an area of woodland is visible to the south. An expansive block of coniferous forestry is partially visible in the background, largely precluding longer-range views.	Medium-low	Due to intervening structures and vegetation, views of the proposed turbines from this location at a distance of c. 6.8km (T1) would be precluded. This screening effect is likely to continue throughout much of the immediate landscape due to the layers of intervening vegetation, including the block of coniferous forestry. On balance of the reasons outlined above, the magnitude of visual change is deemed to be Negligible and of a Neutral quality.	Imperceptible / Neutral / Long Term Not-Significant

VP No.	Existing View	VP Sensitivity	Visual Impact Magnitude	Significance / Quality / Duration of Impact Statement of Significance
	<p>However, glimpse views are available over a sloping area of pasture and residential structures surrounded by dense vegetation to the west, and more elevated agricultural areas to the south-east.</p> <p>Views over this working, rural landscape are not particularly notable.</p>			
VP6	<p>Local road at Castletown - This view is representative of those that would be experienced by residents to varying degrees (subject to intervening vegetation) scattered throughout the local landscape.</p> <p>Views towards the site are over a largely flat, open area of agricultural land, bounded by fencing and low sections of hedgerow. In the mid-ground, residential and farmstead structures are partially visible to the south-west, largely screened by sections of hedging, hedgerows, and clusters of trees. Glimpse views of distant upland areas, blanketed in areas of bog, blocks of coniferous forestry, and scattered wind farm developments, are available along the horizon.</p> <p>Views over this working, rural landscape are not particularly notable.</p>	Medium-low	<p>All eleven of the proposed turbines are largely visible, rising above the landform at a distance of c. 5.8km. In this location, all of the proposed turbines within the northern array present with a comparable degree of prominence, given their relative proximity, while the three proposed turbines within the southern array appear more distant.</p> <p>The arrangement of the turbines means that they present in a clear, comprehensible, and legible manner, with a high degree of visual permeability. They are well-spaced across the view, with only a minor degree of overlap between two turbines in the northern array. There is some shortening of the proposed turbines by a combination of vegetation and rolling landform.</p> <p>As tall, kinetic structures, the visible proposed turbines, particularly those within the northern array, would contribute to an increase in the intensity, scale, and extent of built development within an area that is otherwise characterised by low levels of built</p>	<p>Slight / Negative / Long Term</p> <p>Not-Significant</p>

VP No.	Existing View	VP Sensitivity	Visual Impact Magnitude	Significance / Quality / Duration of Impact Statement of Significance
			<p>development. Within the context of the wider setting, they will represent an intensification of wind energy development and anthropogenic land use. However, the perceived scale of the turbines visible is somewhat moderated by intervening vegetation and topography within the view, which also somewhat reduces their perceived prominence and influence on the view. The scale of the scheme appears well proportioned to the surrounding landscape, resulting in sub to co-dominant visual presence. They will be seen in the context of a productive rural setting, and, while prominent, they are not considered to generate a sense of overbearing.</p> <p>On balance of the reasons outlined above, the magnitude of visual change is deemed to be Medium-low and of a Negative quality.</p>	
VP7	<p>M8 at Lonfordpass North - This view is representative of those that would be experienced transiently from the M8 motorway, part of which also comprises designated Scenic Route 63, and those that would be experienced by residents to varying degrees (subject to intervening vegetation) scattered throughout the local landscape.</p>	Medium	<p>Eight of the proposed turbines are largely visible, rising above the intervening vegetation at a distance of c. 3.2km. Given their relative distance, additional turbines may be visible from other locations along the motorway, the composition of which can be seen in the Wireline Model. In this location, Turbine 1 is the closest and appears most prominently, while the visual weight of the other visible proposed turbines is moderated by intervening vegetation.</p>	<p>Moderate / Negative / Long Term</p> <p>Not-Significant</p>

VP No.	Existing View	VP Sensitivity	Visual Impact Magnitude	Significance / Quality / Duration of Impact Statement of Significance
	<p>Views towards the site are over the elevated motorway, bordered by concrete guardrails. Beyond this, a largely flat agricultural landscape is partially visible, intersected by hedgerows, rows of trees, and areas of woodland. Glimpse views of upland agricultural areas, covered in dense areas of mature vegetation, are available along the horizon.</p> <p>While there are pleasant aspects, and an associated scenic designation, views over this working, rural landscape, largely screened by layers of vegetation and influenced by road infrastructure, are not particularly notable.</p>		<p>The arrangement of the turbines means that they present in a relatively legible manner, with a high degree of visual permeability. They are well-spaced across the view, with only a minor degree of overlap between two turbines. There is some shortening of the proposed turbines by the foreground vegetation, which will generate a sense of visual ambiguity; however, this is moderated by the clear visibility of other turbines within the array.</p> <p>As visible, kinetic structures, the proposed turbines would contribute to an increase in the intensity, scale, and extent of built development within views over a primarily rural landscape; however, the immediate landscape of the view is influenced by road infrastructure. The extent of the proposed turbines is moderated by intervening vegetation within the view, and the scheme does not appear over-scaled within surrounding landscape, resulting in sub to co-dominant visual presence. The proposed turbines will be seen in the context of a robust, working, rural setting, detracting from a sense of rural amenity within the wider landscape in a minor way.</p> <p>On balance of the reasons outlined above, the magnitude of visual change is deemed to be Medium and of a Negative quality.</p>	

VP No.	Existing View	VP Sensitivity	Visual Impact Magnitude	Significance / Quality / Duration of Impact Statement of Significance
VP8	<p>Local road at Leigh - This view is representative of those that would be experienced by residents to varying degrees (subject to intervening vegetation) scattered throughout the local landscape south of the R639 and M8 road corridors.</p> <p>Views towards the site are over a rolling agricultural landscape, bounded and intersected by a network of hedgerows, areas of woodland and scrub, and blocks of coniferous forestry. In the mid-ground, a large swathe of cut bog with regenerating vegetation is partially visible. Longer range views are generally screened by intervening vegetation; however, in the distance, glimpse views are available over the horizon, defined by a broad ridge and covered in a patchwork of fields and forestry. One wind turbine is visible along this ridge.</p> <p>Views over this rural landscape are somewhat notable due to the naturalistic and scenic qualities of the landscape.</p>	Medium	<p>All eleven of the proposed turbines are largely visible, rising within the surrounding landscape at a distance of c. 2.2 km. In this location, Turbine 1 is the closest and appears most prominently, with the remainder of the turbines within the northern array presenting with a comparable degree of prominence, given their relative proximity. Similarly, further in the distance, the proposed turbines within the southern array present with a respective degree of prominence.</p> <p>The proposed turbines extend across the horizon and are well spaced throughout the view, tapering into the distance and contributing to a sense of perspective. There is a degree of shortening of those turbines viewed behind the block of coniferous forestry, with the tips of the blade sets dipping below the tops of the trees. While this is mitigated by the clear visibility of the more northern and southern turbines within the scheme, a degree of visual irritation remains.</p> <p>As tall, kinetic structures, the proposed turbines, particularly those within the northern array, would inherently be a prominent feature of this view and will detract from a sense of rural amenity. Due to their proximity to the viewpoint and their extent throughout the view, the relative visual presence of the proposed turbines will be co-dominant.</p>	<p>Moderate / Negative / Long Term</p> <p>Not-Significant</p>

VP No.	Existing View	VP Sensitivity	Visual Impact Magnitude	Significance / Quality / Duration of Impact Statement of Significance
			<p>However, the extent of the proposed turbines is somewhat moderated by intervening vegetation within the view, which also somewhat reduces their perceived prominence and influence on the view. The productive rural landscape is able to accommodate the proposed turbines in terms of scale and function. In this regard, while noticeable, the proposed turbines are not considered to generate a sense of overbearing.</p> <p>On balance of the reasons outlined above, the magnitude of visual change is deemed to be Medium and of a Negative quality.</p>	
VP9	<p>Good Shepherd Cemetery Gortnahoe - This view is representative of those experienced at the Good Shepherd Cemetery and those that would be experienced by residents to varying degrees (subject to intervening vegetation) within and around Gortnahoe.</p> <p>Views towards the site are over a largely flat area within the Cemetery, bounded by stone walls. Beyond this lies a largely flat agricultural area, bounded and intersected by sections of hedgerow, areas of woodland and scrub, and blocks of coniferous forestry. Farmstead structures are visible within this landscape.</p>	Medium	<p>All eleven of the proposed turbines are largely visible, rising behind the blocks of coniferous forestry at a distance of c. 2.9km. In this location, Turbine 1 is the closest and appears most prominently, with the remainder of the turbines within the northern array presenting with a comparable degree of prominence, given their relative proximity. Similarly, further in the distance, the proposed turbines within the southern array present with a respective degree of prominence.</p> <p>The proposed turbines present in a relatively clear and legible manner, within a somewhat condensed layout that occupies a moderate extent of the overall view. There is a degree of shortening of the turbines viewed behind the blocks of coniferous forestry.</p>	<p>Moderate / Negative / Long Term</p> <p>Not-Significant</p>

VP No.	Existing View	VP Sensitivity	Visual Impact Magnitude	Significance / Quality / Duration of Impact Statement of Significance
	<p>Glimpse views are available of low rolling hills in the distance. Powerlines are visible throughout the landscape.</p> <p>Views over this rural landscape are not particularly notable. However, the cemetery has its own cultural and heritage associations.</p>		<p>However, these areas of forestry also create a degree of visual separation between the viewer and the proposed turbines. There is a degree of turbine overlap between two turbines, as well as a powerline in the foreground, creating a minor sense of visual clutter.</p> <p>As tall, kinetic structures, the proposed turbines, particularly those within the northern array, would be noticeable within this view and will detract from a sense of rural amenity. The relative visual presence of the proposed turbines will be sub-dominant due to their layout within the view and relative distance from the viewpoint. The visual presence of the proposed turbines is somewhat moderated by intervening vegetation, which also somewhat reduces their perceived prominence and influence on the view. The broad, lateral extent of this productive rural landscape is able to accommodate the proposed turbines in terms of scale, extent, and function. In this regard, while noticeable, the proposed turbines are not considered to generate a sense of overbearing.</p> <p>On balance of the reasons outlined above, the magnitude of visual change is deemed to be Medium and of a Negative quality.</p>	

VP No.	Existing View	VP Sensitivity	Visual Impact Magnitude	Significance / Quality / Duration of Impact Statement of Significance
VP10	<p>Kilcooley Abbey - This view is representative of those experienced from Kilcooley Abbey.</p> <p>Views towards the site are over the heritage feature of Kilcooley Abbey, bordered by a gently sloping expanse of grass. Longer range views are precluded by areas of mature woodland and forestry that surround the Abbey to the south.</p> <p>This view is notable due to the significance of this heritage feature, and the naturalistic and scenic qualities of the landscape.</p>	High-medium	<p>Due to intervening vegetation, views of the proposed turbines from this location at a distance of c. 5.1 km (T1) would be precluded.</p> <p>This screening effect is likely to continue throughout much of the immediate landscape due to the layers of intervening vegetation, including blocks of coniferous forestry.</p> <p>On balance of the reasons outlined above, the magnitude of visual change is deemed to be Negligible and of a Neutral quality.</p>	<p>Imperceptible / Neutral / Long Term</p> <p>Not-Significant</p>
VP11	<p>L4202 at Twomileborris - This view is representative of those that would be experienced by residents to varying degrees (subject to intervening vegetation) within and around Twomileborris.</p> <p>Views towards the site are over a series of private residential properties along the local road, bounded by walls, sections of walls, and individual trees and shrubs. Residential structures and powerlines are partially visible throughout the view.</p>	Medium-low	<p>Two proposed turbines are partially visible, rising within beyond the intervening vegetation at a distance of c. 3.1 km (T4).</p> <p>These visible proposed turbines are partially screened by localised vegetation and built structures. While reducing their perceived influence on the view and creating a visual separation between the visual receptors and the proposed turbines, this also creates some ambiguity as to the location of the turbines.</p>	<p>Moderate-slight / Negative / Long Term</p> <p>Not-Significant</p>

VP No.	Existing View	VP Sensitivity	Visual Impact Magnitude	Significance / Quality / Duration of Impact Statement of Significance
	<p>In the distance, glimpse views are available over the wider landscape, including areas of vegetation along the M8 motorway corridor and a sloping ridgeline in the distance.</p> <p>While pleasant, views over this settled landscape are not particularly notable.</p>		<p>This screening effect is likely to continue throughout much of the immediate landscape due to the density of boundary vegetation and vegetation within individual properties; however, additional turbines may be visible from other locations, given their relative distance, the composition of which can be seen in the Wireline Model.</p> <p>While partially screened, these visible proposed turbines will be noticeable within the landscape due to their relative proximity and sub-dominant visual presence. However, given their slight extent within the view and the context of vegetation and built structures occurring within this settled landscape, the proposed turbines would not generate a notable influence on the view. They would be seen as a small part of views within a much wider rural setting, detracting from the sense of scenic amenity in a minor way.</p> <p>On balance of the reasons outlined above, the magnitude of visual change is deemed to be Medium-low and of a Negative quality.</p>	

VP No.	Existing View	VP Sensitivity	Visual Impact Magnitude	Significance / Quality / Duration of Impact Statement of Significance
VP12	<p>Local road at Grangecastle - This view is representative of those experienced from the Grange Loop walking trail, and those that would be experienced by residents to varying degrees (subject to intervening vegetation) within the local area.</p> <p>This view is also representative of the Wellington Tower Monument, located approximately 1.2km to the northeast.</p> <p>Views towards the site are over an area of rolling agricultural land, bounded and largely contained by sections of mature hedgerow. This landscape continues into the mid-ground and background, where glimpse views are available over areas of woodland and a residential structure. Powerlines are visible throughout the landscape.</p> <p>Views over this rural landscape are somewhat notable due to their naturalistic and scenic qualities.</p>	Medium	<p>Fleeting views of the blade tips of three of the proposed turbines, rotating behind the more distant areas of coniferous forestry, would be possible.</p> <p>While substantially screened by intervening vegetation, these blade tips have the potential to draw the eye; however, due to their relatively minimal visual presence, they may not be noticed by a casual observer or passer-by.</p> <p>At a distance of c. 6.7km (T1), and in the context of the successive layers of vegetation throughout the local and wider landscape, it is not considered that this partial visibility would generate a notable influence on the view, nor notably detract from any sense of visual amenity within this view. The layers of intervening vegetation create a sense of separation from the visual receptor, as well as an ambiguity as to the location of the proposed turbines.</p> <p>From some areas within the wider landscape, there may be glimpse views of some additional blade tips or partial turbines. However, this would likely have no additional bearing on visual amenity, as the screening effect of vegetation that is present within this view is likely to continue throughout the local landscape.</p> <p>On balance of the reasons outlined above, the magnitude of visual change is deemed to be Low-negligible and of a Negative quality.</p>	<p>Slight-Imperceptible / Negative / Long Term</p> <p>Not-Significant</p>

VP No.	Existing View	VP Sensitivity	Visual Impact Magnitude	Significance / Quality / Duration of Impact Statement of Significance
VP13	<p>N75 east of Thurles - This view is representative of those experienced transiently from the N75 national secondary route, and those that would be experienced by residents to varying degrees (subject to intervening vegetation) within and around Thurles.</p> <p>Views towards the site are over the N75, bounded by hedgerows and walls. To the north, private properties and associated structures and vegetation are visible along the road. To the south, views are over a largely flat area of agricultural land, bounded by a network of hedgerows and areas of woodland. Glimpse views of distant upland areas are available. Powerlines are visible throughout the landscape.</p> <p>While pleasant, views over this working, semi-rural landscape are not particularly notable.</p>	Medium-low	<p>Fleeting views of the blade tips of six of the proposed turbines, spread across the view, would be possible at a distance of c. 8.9km (T7). Some hubs and partial towers are also visible.</p> <p>From this orientation, the visible proposed turbines are largely screened by intervening vegetation within both the local and wider landscape. While this reduces their perceived prominence and influence on this view, it also creates a minor degree of visual clutter and irritation, as there is also a degree of turbine overlap within the southern array.</p> <p>While the proposed turbines would be a noticeable visual element throughout the view, presenting with a minimal to co-dominant visual presence, it is not considered that they would generate a notable influence on views, nor notably detract from any sense of visual amenity. The layers of intervening vegetation create a sense of separation from the visual receptor, as well as an ambiguity as to the location of the proposed turbines.</p> <p>From some areas within the wider landscape, there may be glimpse views of some additional blade tips or partial turbines. However, this would likely have no additional bearing on visual amenity, as the screening effect of vegetation that is present within this view is likely to continue throughout the local landscape.</p>	<p>Slight / Negative / Long Term</p> <p>Not-Significant</p>

VP No.	Existing View	VP Sensitivity	Visual Impact Magnitude	Significance / Quality / Duration of Impact Statement of Significance
			On balance of the reasons outlined above, the magnitude of visual change is deemed to be Low and of a Negative quality.	
VP14	<p>N75 at Borris - This view is representative of those experienced transiently from the N75 national secondary route, along which Tipperary designated Scenic View 62, which is also represented by this viewpoint, is located, and those that would be experienced by residents to varying degrees (subject to intervening vegetation) throughout the local landscape.</p> <p>Views towards the site are over the N75 which intersects a largely flat area of agricultural land, interspersed with trees, hedgerows, and areas of scrub. Glimpse views of broad expanses of distant upland areas are available along the horizon. Lighting, protective barriers, and signage associated with the N75 are visible throughout the view.</p> <p>While somewhat pleasant, and with an associated scenic designation, views over this rural landscape are largely influenced by road infrastructure.</p>	Medium	<p>To the north-east, six of the proposed turbines within the northern array are largely visible, rising from within the distant agricultural landscape at a distance of c. 3.6km (T4). The two remaining turbines within the northern array are also partially visible from this orientation, largely screened by intervening vegetation in the local landscape. To the south-east, the blade sets of all three turbines within the southern array are partially visible, largely screened by intervening vegetation along the N75. In this location, while Turbine 4 is the closest, all visible proposed turbines within the northern array present with a comparable degree of prominence, given their relative proximity. The three turbines within the southern array appear more distant.</p> <p>Although they are offset from visual receptors, the proposed turbines are a noticeable feature throughout much of the view, presenting with a co- to sub-dominant visual presence. From both orientations, the proposed turbines occupy a moderate extent of the overall view, the arrays well-spaced and legible across the horizon. There is a minor degree of turbine overlap, which generates a sense of visual discord.</p>	<p>Moderate / Negative / Long Term</p> <p>Not-Significant</p>

VP No.	Existing View	VP Sensitivity	Visual Impact Magnitude	Significance / Quality / Duration of Impact Statement of Significance
			<p>As visible, kinetic structures, the proposed turbines would contribute to an increase in the intensity, scale, and extent of built development within the view, their form filtering views of the upland areas in the distance. However, this view is over a landscape within which anthropogenic land use, including large scale road infrastructure, is part of the landscape character. The extent of the proposed turbines is moderated by intervening vegetation throughout the local landscape. The proposed turbines will be seen in the context of a robust, working, rural setting, detracting from a sense of rural amenity within the wider landscape in a minor way.</p> <p>On balance of the reasons outlined above, the magnitude of visual change is deemed to be Medium and of a Negative quality.</p>	
VP15	<p>Buolick Graveyard - This view is representative of views from the Boulick Medieval Church & Burial Ground, and those that would be experienced by residents to varying degrees (subject to intervening vegetation) throughout the local landscape.</p>	Medium	<p>To the south-west, three turbines within the northern array are largely visible, rising from within the areas of coniferous forestry at a distance of c. 1.9km (T3). Two additional turbines within this array and one of the turbines within the southern array are partially visible, largely screened by intervening topography and structures within the local landscape. To the west, two additional turbines within the northern array are largely visible as well.</p>	<p>Moderate / Negative / Long Term</p> <p>Not-Significant</p>

VP No.	Existing View	VP Sensitivity	Visual Impact Magnitude	Significance / Quality / Duration of Impact Statement of Significance
	<p>Views towards the site are over a relatively flat agricultural area, bounded and intersected by sections of hedgerow and scrub. In the background, views are over blocks of coniferous forestry and groups of conifers, which generally preclude longer range views. Some farmstead structures are visible within the landscape.</p> <p>Views over this rural landscape are not particularly notable. However, the cemetery has its own cultural and heritage associations. It should be noted that the primary amenity and heritage value of views associated with the cemetery are located to the north, directed away from the site.</p>		<p>In this location, while Turbine 3 is the closest, all visible proposed turbines within the northern array present with a comparable degree of prominence, given their relative proximity. The visible turbine within the southern array appears more distant.</p> <p>The arrangement of the turbines means that they present in an orderly and legible manner, with a high degree of visual permeability, and are well-spaced across the view, though there is some minor overlap between two turbines.</p> <p>The visual presence of proposed turbines from both arrays will increase the extent of built development within this view. However, the scale and distribution of the proposed turbines responds well to the scale of the broad, lateral extent of the landscape.</p> <p>As tall, kinetic structures, the proposed turbines, particularly those within the northern array, would inherently be a prominent feature of this view and will detract from a sense of rural amenity. However, the extent of the proposed turbines is somewhat moderated by intervening vegetation within the view, which also somewhat reduces their perceived prominence and influence on the view. The productive rural landscape is able to accommodate the proposed turbines in terms of scale and function.</p>	

VP No.	Existing View	VP Sensitivity	Visual Impact Magnitude	Significance / Quality / Duration of Impact Statement of Significance
			<p>In this regard, while noticeable and presenting with a co-dominant to dominant visual presence, the proposed turbines are not considered to generate a sense of overbearing.</p> <p>On balance of the reasons outlined above, the magnitude of visual change is deemed to be Medium and of a Negative quality.</p>	
VP16	<p>R690 at Clonamicklon - This view is representative of those that would be experienced transiently along the R690 regional road, and those that would be experienced by residents to varying degrees (subject to intervening vegetation) within the local landscape.</p> <p>Views towards the site are over a broad and largely flat area of agricultural land, bounded by sections of hedge and hedgerows. In the background, Clonamicklon Castle is visible, surrounded by residential and farmstead structures. Beyond this, longer range views are generally precluded by hedgerows and areas of woodland, though some glimpse views of distant upland areas are available. This view is somewhat notable due to the heritage feature of Clonamicklon Castle.</p>	Medium	<p>One proposed turbine is largely visible, rising beyond a distant woodland at a distance of c. 4.6km (T1). Blade sets of three additional proposed turbines are partially visible, rotating behind the hedgerows within the local landscape.</p> <p>Within this view, the perceived prominence and influence of the proposed turbines is largely mitigated by intervening vegetation. The layers of intervening vegetation create a sense of separation from the visual receptor, as well as an ambiguity as to the location of the proposed turbines. However, as can be seen in the Wireline Model, the proposed turbines extend across the horizon. It is likely that additional proposed turbines will be at least partially visible from other areas within the local landscape.</p> <p>As kinetic structures, the visible proposed turbines would contribute to an increase in the intensity, scale, and extent of built development within the view.</p>	<p>Moderate-slight / Negative / Long Term</p> <p>Not-Significant</p>

VP No.	Existing View	VP Sensitivity	Visual Impact Magnitude	Significance / Quality / Duration of Impact Statement of Significance
	<p>However, views towards the castle are largely influenced by agricultural production land use.</p>		<p>However, this view is over a landscape within which anthropogenic land use is part of the landscape character. The extent of the proposed turbines is moderated by intervening vegetation throughout the local and distant landscape. The proposed turbines will be seen in the context of a working, rural setting, detracting from a sense of rural amenity within the wider landscape in a minor way.</p> <p>On balance of the reasons outlined above, the magnitude of visual change is deemed to be Medium-low and of a Negative quality.</p>	
VP17	<p>Local road at Poyntstown (1) - This view is representative of those that would be experienced by residents to varying degrees (subject to intervening vegetation) within the local landscape.</p> <p>Views towards the site are over a largely flat agricultural landscape, bounded and intersected by a network of trimmed hedgerows and large areas of woodland and forestry. Residential and farmstead structures, and associated properties, are visible throughout the view. Views of distant, rolling upland areas are available along this horizon, blanketed in areas of bog, forestry, and agricultural land use.</p>	Medium	<p>To the south-west, all three proposed turbines within the southern array and three turbines within the northern array are largely visible at a distance of c. 1.8km (T3). To the north-west, the remaining five turbines within the northern array are largely visible, rising from within the areas of forestry and woodland in the mid-ground. In this location, while Turbine 3 is the closest, all visible proposed turbines within the northern array present with a comparable degree of prominence, given their relative proximity. The visible turbine within the southern array appears more distant. Overall, despite presenting with a strong sense of visual permeability here, the turbines are classified with a dominant visual presence.</p>	<p>Substantial-moderate/ Negative / Long Term</p> <p>Not-Significant</p>

VP No.	Existing View	VP Sensitivity	Visual Impact Magnitude	Significance / Quality / Duration of Impact Statement of Significance
	<p>A wind energy development is visible within an upland area to the south-west. Powerlines are visible throughout the landscape.</p> <p>Views over this rural landscape are somewhat notable due to their extent.</p>		<p>The arrangement of the turbines means that they present in an orderly and legible manner, with a high degree of visual permeability, and are well-spaced across the view, though there is some minor overlap between two turbines. The proposed turbines will filter views over the more distant upland areas.</p> <p>As tall, kinetic structures, the proposed turbines, particularly those within the northern array, would be noticeable within this view and will detract from a sense of rural amenity. The relative visual presence of the proposed turbines will be dominant due to their layout within the view and relative distance from the viewpoint. The proposed turbines represent a notable increase in the intensity and extent of built development within this rural landscape. However, the broad, lateral extent of this productive landscape, influenced by agriculture and forestry, is able to accommodate the proposed turbines in terms of scale, extent, and function. Within the wider landscape, this development type would not be unfamiliar, as the surrounding upland area is already influenced by existing wind energy development. In this regard, while noticeable, the proposed turbines are not considered to generate a sense of overbearing.</p> <p>On balance of the reasons outlined above, the magnitude of visual change is deemed to be High-medium and of a Negative quality.</p>	

VP No.	Existing View	VP Sensitivity	Visual Impact Magnitude	Significance / Quality / Duration of Impact Statement of Significance
VP18	<p>Local road adjacent to Two-mile Borris GAA club at Newhill - This view is representative of those that would be experienced by residents to varying degrees (subject to intervening vegetation) within the local landscape.</p> <p>Views towards the site are over a sloping agricultural landscape, bounded by a network of mature hedgerows and the local road. This hedgerow network largely precludes longer range views. Farmstead structures are visible to the north. Glimpse views of upland areas are available in the distance.</p> <p>While pleasant, views over this rural landscape are not particularly notable.</p>	Medium-low	<p>To the east, two proposed turbines within the northern array are largely visible at a distance of c. 2.5km, while the remaining six turbines within this array are partially visible. To the south, one proposed turbine within the southern array is partially visible. In this location, while Turbine 7 is the closest, all visible proposed turbines within the northern array present with a comparable degree of prominence, given their relative proximity.</p> <p>All visible proposed turbines are largely screened by intervening vegetation. While reducing their perceived influence on the view and creating a visual separation between the visual receptors and the proposed turbines, this screening also creates some ambiguity as to the location of the turbines. This screening effect is likely to continue throughout much of the immediate landscape due to the network of layered hedgerows and vegetation throughout the local and wider landscape; however, the turbines may be more visible from other locations within the local landscape, given their relative distance.</p> <p>While partially screened, these visible proposed turbines will be noticeable within the landscape due to their relative proximity and sub-dominant visual presence.</p>	<p>Moderate / Negative / Long Term</p> <p>Not-Significant</p>

VP No.	Existing View	VP Sensitivity	Visual Impact Magnitude	Significance / Quality / Duration of Impact Statement of Significance
			<p>However, given their slight extent within the view and the context of vegetation occurring within this settled landscape, the proposed turbines would not generate a notable influence on the view.</p> <p>They would be seen as a small part of views within a much wider rural setting, detracting from the sense of scenic amenity in a minor way.</p> <p>On balance of the reasons outlined above, the magnitude of visual change is deemed to be Medium and of a Negative quality.</p>	
VP19	<p>R639 north of Littleton Town Centre - This view is representative of those that would be experienced transiently along the R639 regional road, and those that would be experienced by residents to varying degrees (subject to intervening vegetation) within and around Littleton.</p> <p>Views towards the site are over a low rolling agricultural area, bounded by a network of hedgerows and individual trees. Longer range views are generally precluded by intervening vegetation and topography; however, glimpse views of distant upland areas are available. Powerlines and farmstead structures are visible throughout the landscape.</p>	Medium-low	<p>To the north-east, six of the proposed turbines within the northern array are partially visible at a distance of c. 4km, along with the blade tips of one additional turbine. To the south-east, all three of the proposed turbines within the southern array are largely visible. In this location, while Turbine 9 is the closest, all visible proposed turbines present with a comparable degree of prominence, given their relative proximity.</p> <p>The arrangement of the turbines means that they present in an orderly manner, with a high degree of visual permeability, and are well-spaced across the view, though there is some minor overlap between two turbines and between the powerlines throughout the landscape, which generates a sense of visual discord.</p>	<p>Moderate-slight / Negative / Long Term</p> <p>Not-Significant</p>

VP No.	Existing View	VP Sensitivity	Visual Impact Magnitude	Significance / Quality / Duration of Impact Statement of Significance
	While pleasant, views over this rural landscape are not particularly notable.		<p>All visible proposed turbines are largely screened by intervening vegetation. While reducing their perceived influence on the view and creating a visual separation between the visual receptors and the proposed turbines, this screening also creates some ambiguity as to the location of the turbines. While this is mitigated by the clear visibility of the southern array, a degree of visual irritation remains. This screening effect is likely to continue throughout much of the immediate landscape due to the network of layered hedgerows and vegetation throughout the local and wider landscape.</p> <p>These visible proposed turbines will be noticeable within the landscape due to their relative proximity and sub-dominant visual presence. However, given their slight extent within the view and the context of vegetation occurring within this semi-rural landscape, the proposed turbines would not generate a notable influence on the view. They would be seen as a small part of views within a much wider rural setting, detracting from the sense of scenic amenity in a minor way.</p> <p>On balance of the reasons outlined above, the magnitude of visual change is deemed to be Medium-low and of a Negative quality.</p>	

VP No.	Existing View	VP Sensitivity	Visual Impact Magnitude	Significance / Quality / Duration of Impact Statement of Significance
VP20	<p>Local road at Poyntstown (2) - This view is representative of those that would be experienced by residents to varying degrees (subject to intervening vegetation) within the local landscape.</p> <p>Views towards the site are over a sloping agricultural area, bounded by the local road. The local road is bordered by mature hedgerows to the south and by a residential property surrounded by planted vegetation and low walls to the north. Longer range views are generally precluded by intervening topography. Powerlines are visible throughout the landscape.</p> <p>While pleasant, views over this rural landscape are not particularly notable.</p>	Medium-low	<p>To the west, five turbines within the northern array are largely visible, rising from within the agricultural landscape at a distance of c. 1.2km. To the north-west, the blade tips of one additional turbine within this array are partially visible, largely screened by intervening vegetation. In this location, Turbine 8 is the closest and appears most prominently along with Turbine 6. The remaining visible proposed turbines present with a comparable degree of proximity. Overall, the turbines will be a dominant built feature in this local context.</p> <p>The arrangement of the turbines means that they present in an orderly and legible manner, with a high degree of visual permeability, and are well-spaced across the view, though there is some very minor overlap between the blade sets of two proposed turbines. While the turbines to the north-west are largely screened in this location, additional turbines may be more visible from other locations within the local landscape, given their relative distance.</p> <p>As tall, kinetic structures, the proposed turbines would be noticeable within this view and will detract from a sense of rural amenity. The relative visual presence of the proposed turbines will be dominant due to their extent within the view and their relative distance from the viewpoint.</p>	<p>Substantial-moderate/ Negative / Long Term</p> <p>Not-Significant</p>

VP No.	Existing View	VP Sensitivity	Visual Impact Magnitude	Significance / Quality / Duration of Impact Statement of Significance
			<p>The proposed turbines represent a notable increase in the intensity and extent of built development within this rural landscape.</p> <p>However, this broad and open landscape is able to accommodate the proposed turbines in terms of extent. From this location, the proposed turbines appear at a similar scale to the existing powerlines within the landscape, and as such, do not appear to be over-scaled. In this regard, while noticeable, the proposed turbines are not considered to generate a sense of overbearing.</p> <p>On balance of the reasons outlined above, the magnitude of visual change is deemed to be High-medium and of a Negative quality.</p>	
VP21	<p>Local road at Derryhogan - This view is representative of those that would be experienced by residents to varying degrees (subject to intervening vegetation) within the local landscape.</p> <p>Views towards the site are over a largely flat agricultural area bounded by hedgerows and individual trees. Residential and farmstead structures are visible to the east, largely screened by intervening vegetation.</p>	Medium-low	<p>To the north-east, four proposed turbines within the northern array are partially visible, rising behind the layers of intervening vegetation. The blade sets of two additional turbines are also partially visible. To the south-east, all three proposed turbines within the southern array are largely visible at a distance of c. 1.6km. In this location, Turbine 9 is the closest and appears most prominently, while all proposed turbines within the northern array appear with a comparable degree of proximity.</p>	<p>Moderate / Negative / Long Term</p> <p>Not-Significant</p>

VP No.	Existing View	VP Sensitivity	Visual Impact Magnitude	Significance / Quality / Duration of Impact Statement of Significance
	<p>Longer range views are generally precluded by intervening topography. Powerlines are visible throughout the landscape.</p> <p>While there are pleasant aspects, views over this rural landscape are not particularly notable.</p>		<p>The visible proposed turbines within the northern array are largely screened by intervening vegetation within the local landscape. While this reduces their perceived prominence and influence on this view, it also creates a minor degree of visual clutter and irritation, as there is also a degree of turbine overlap between two pairs of proposed turbines. The screening effect also creates a sense of ambiguity as to the turbine locations, which is somewhat moderated by the higher visibility of the southern array. Within the southern array, there is also some turbine overlap, which adds to the degree of visual clutter. It should be noted that from some areas within the wider landscape, there may be glimpse views of some additional partial turbines within the northern array.</p> <p>The proposed turbines, particularly those within the southern array, would be a noticeable visual element throughout the view given their relative proximity, presenting with a co-dominant visual presence to the north-east and dominant visual presence to the south-east. However, given their slight extent within the overall view and the context of screening vegetation occurring within this productive rural landscape, the proposed turbines would not generate a notable influence on the view.</p>	

VP No.	Existing View	VP Sensitivity	Visual Impact Magnitude	Significance / Quality / Duration of Impact Statement of Significance
			<p>They would be seen as a small part of views within a much wider rural setting, detracting from the sense of scenic amenity in a minor way.</p> <p>On balance of the reasons outlined above, the magnitude of visual change is deemed to be Medium and of a Negative quality.</p>	
VP22	<p>Holycross Cemetery - This view is representative of those experienced at the Holycross Cemetery and those that would be experienced by residents to varying degrees (subject to intervening vegetation) within and around Holycross.</p> <p>Views towards the site are over the cemetery, bounded by stone and blockwork walls. Beyond this, the landscape is densely vegetated and longer-range views are precluded.</p> <p>Views over this rural landscape are somewhat notable due to their naturalistic qualities and the cultural and heritage associations of the cemetery.</p>	Medium	<p>Due to intervening vegetation, views of the proposed turbines from this location at a distance of c. 12.3km (T9) would be precluded.</p> <p>This screening effect is likely to continue throughout much of the immediate landscape due to the layers of intervening vegetation.</p> <p>On balance of the reasons outlined above, the magnitude of visual change is deemed to be Negligible and of a Neutral quality.</p>	<p>Imperceptible / Neutral / Long Term</p> <p>Not-Significant</p>

VP No.	Existing View	VP Sensitivity	Visual Impact Magnitude	Significance / Quality / Duration of Impact Statement of Significance
VP23	<p>R639 at Ballymoreen Graveyard - This view is representative of those experienced at the Ballymoreen Graveyard, those that would be experienced transiently from the R639 regional road, and those that would be experienced by residents to varying degrees (subject to intervening vegetation) throughout the local landscape.</p> <p>Views towards the site are over the R639. Beyond this, a largely flat agricultural area, bounded by a network of low walls and hedgerows, is visible. Residential and farmstead structures, and associated private roads, are visible throughout this landscape. Longer range views are generally precluded by layers of intervening vegetation; however, glimpse views of distant upland areas are available. Powerlines are visible throughout the landscape.</p> <p>While there are pleasant aspects, views over this rural landscape are not particularly notable.</p>	Medium-low	<p>To the north-east, all eight of the proposed turbines within the northern array are partially visible, rising behind the vegetation in the mid-ground. To the south-east, all three proposed turbines within the southern array are largely visible, partially screened by vegetation at a distance of c. 4.4km. In this location, while Turbine 9 is the closest, each array presents with a respective comparable degree of proximity.</p> <p>The visible proposed turbines within the northern array are largely screened by intervening vegetation within the local and wider landscape. While this reduces their perceived prominence and influence on this view, it also creates a minor degree of visual clutter and irritation, as there is also a degree of overlap between the array and the intervening vegetation, and between two of the proposed turbines. The screening effect also creates a sense of ambiguity as to the turbine locations, which is somewhat moderated by the higher visibility of the southern array. The proposed turbines within the southern array appear highly legible and orderly. There is a degree of shortening of all turbines due to the layers of intervening vegetation. However, this vegetation also creates a degree of visual separation between the viewer and the proposed turbines.</p>	<p>Moderate-slight / Negative / Long Term</p> <p>Not-Significant</p>

VP No.	Existing View	VP Sensitivity	Visual Impact Magnitude	Significance / Quality / Duration of Impact Statement of Significance
			<p>The proposed turbines, particularly those within the southern array, would be a noticeable visual element throughout the view given their relative proximity, presenting with a minimal visual presence to the north-east and sub-dominant visual presence to the south-east. However, given their slight extent within the overall view and the context of screening vegetation occurring within this productive rural landscape, the proposed turbines would not generate a notable influence on the view. They would be seen as a small part of views within a much wider rural setting, detracting from the sense of scenic amenity in a minor way.</p> <p>On balance of the reasons outlined above, the magnitude of visual change is deemed to be Medium-low and of a Negative quality.</p>	
VP24	<p>R689 at Poyntstown - This view is representative of those that would be experienced transiently from the R689 regional road, along which designated Scenic View 31, which is also represented by this viewpoint, is located, and those that would be experienced by residents to varying degrees (subject to intervening vegetation) throughout the local landscape.</p>	High-medium	<p>To the south-west, the blade tips of two of the proposed turbines within the southern array are partially visible, rotating behind the layers of intervening vegetation. To the north-west, all eight proposed turbines within the northern array are largely visible at a distance of c. 2.5km. In this location, Turbine 8 is the closest and appears most prominently along with Turbine 6. The remaining visible proposed turbines present with a comparable degree of proximity.</p>	<p>Moderate / Negative / Long Term</p> <p>Not-Significant</p>

VP No.	Existing View	VP Sensitivity	Visual Impact Magnitude	Significance / Quality / Duration of Impact Statement of Significance
	<p>Views towards the site are over a largely flat agricultural area, bounded and intersected by sections of hedgerows and areas of woodland. Residential and farmstead structures are visible throughout this landscape. Layers of successive vegetation within this agricultural landscape are visible throughout the mid-ground and background. Distant upland areas are partially visible along the horizon. Powerlines are visible throughout the landscape.</p> <p>Views over this rural landscape are notable due to their scenic designation, extent, and some naturalistic qualities.</p>		<p>The arrangement of the turbines means that they present in an orderly and legible manner, with a high degree of visual permeability, and are well-spaced across the view, though there is some very minor overlap between two proposed turbines. While the turbines to the within the southern array are largely screened in this location, additional turbines may be more visible from other locations within the local landscape, given their relative distance.</p> <p>As tall, kinetic structures, the proposed turbines would noticeable within this view and will detract from a sense of rural amenity. The relative visual presence of the proposed turbines will be co-dominant due to their extent within the view and their relative distance from the viewpoint. The proposed turbines represent a notable increase in the intensity and extent of built development within this rural landscape. However, the extent of the proposed turbines is somewhat moderated by intervening vegetation throughout the local and distant landscape, and this broad, rural landscape is able to accommodate the proposed turbines in terms of extent. In this regard, while noticeable, the proposed turbines are not considered to generate a sense of overbearing.</p> <p>On balance of the reasons outlined above, the magnitude of visual change is deemed to be Medium and of a Negative quality.</p>	

VP No.	Existing View	VP Sensitivity	Visual Impact Magnitude	Significance / Quality / Duration of Impact Statement of Significance
VP25	<p>Famine Warehouse 1848 - This view is representative of those that would be experienced at the Famine Warehouse 1848 and from designated Scenic View 27. Views towards the site are over a sloping grassed area and the Famine Warehouse.</p> <p>Lighting columns and a stone wall associated with the warehouse are visible around the structure. This area is surrounded by a dense line of trees and areas of woodland. That generally preclude longer range views; however, glimpse views of agricultural areas and layers of intervening vegetation are visible through these trees.</p> <p>Views over this landscape are notable due to scenic designation, the cultural and historical significance of the Famine Warehouse, and the naturalistic qualities of the surrounding vegetation.</p>	High-medium	<p>Due to intervening vegetation, views of the proposed turbines from this location at a distance of c. 9.4km (T6) would be precluded.</p> <p>This screening effect is likely to continue throughout much of the immediate landscape due to the layers of intervening vegetation.</p> <p>On balance of the reasons outlined above, the magnitude of visual change is deemed to be Negligible and of a Neutral quality.</p>	<p>Imperceptible / Neutral / Long Term</p> <p>Not-Significant</p>
VP26	<p>Local road at Littleton - This view is representative of those that would be experienced by residents to varying degrees (subject to intervening vegetation) within the local landscape.</p>	Medium-low	<p>To the north-east, one proposed turbine within the northern array is partially visible, along with the blade set of one other turbine. To the south-east, all three proposed turbines within the southern array are partially visible, rising behind the intervening vegetation at distance of c. 2.3km.</p>	<p>Moderate / Negative / Long Term</p> <p>Not-Significant</p>

VP No.	Existing View	VP Sensitivity	Visual Impact Magnitude	Significance / Quality / Duration of Impact Statement of Significance
	<p>Views towards the site are over the local road, bordered by agricultural areas bounded by fencing and sections of hedgerow and areas of bog. Beyond this, views are over dense layers of vegetation, within and around an area of bog. Longer range views are generally precluded by this intervening vegetation; however, glimpse views of distant upland areas are available. Powerlines and signage are visible with the foreground.</p> <p>While there are pleasant aspects, views over this rural landscape are not particularly notable.</p>		<p>In this location, Turbine 9 is the closest and appears most prominently, with the remainder of the turbines within the southern array presenting with a comparable degree of prominence, given their relative proximity.</p> <p>To the south-east, the visible proposed turbines within the southern array present in a relatively clear and legible manner, within a somewhat condensed layout that occupies a small extent of the overall view. There is a degree of shortening of the turbines viewed behind the layers of intervening vegetation. However, this vegetation also creates a degree of visual separation between the viewer and the proposed turbines. From this orientation, there is a degree of turbine overlap between the proposed turbines and a powerline in the foreground, creating a minor sense of visual clutter.</p> <p>To the north-east, the proposed turbines within the northern array, largely screened by intervening vegetation, occupy a slight extent of the overall view. The layers of intervening vegetation reduce their perceived prominence and influence on the view.</p> <p>As tall, kinetic structures, the proposed turbines, particularly those within the southern array, would be noticeable within this view and will detract from a sense of rural amenity.</p>	

VP No.	Existing View	VP Sensitivity	Visual Impact Magnitude	Significance / Quality / Duration of Impact Statement of Significance
			<p>The relative visual presence of the proposed turbines will be sub-dominant due to their layout within the view and relative distance from the viewpoint.</p> <p>However, the visual presence of the proposed turbines is somewhat moderated by intervening vegetation. This productive rural landscape, influenced by anthropogenic land use, is able to accommodate the proposed turbines in terms of scale, extent, and function. In this regard, while noticeable, the proposed turbines are not considered to generate a sense of overbearing.</p> <p>On balance of the reasons outlined above, the magnitude of visual change is deemed to be Medium and of a Negative quality.</p>	
VP27	<p>Lough Doire Bhile Loop - This view is representative of those that would be experienced from the Lough Doire Bhile Loop walking trail, and those that would be experienced by residents to varying degrees (subject to intervening vegetation) within the local landscape.</p> <p>To the north, views towards the site are over Lough Doire, bordered by a walking trail and areas of aquatic vegetation and bog, and some sections of scrub and woodland.</p>	High-medium	<p>To the north, all eight of the proposed turbines within the northern array are largely visible, rising behind the layers of intervening vegetation in the mid-ground. To the south, all three of the proposed turbines within the southern array are largely visible, rising within the local landscape at a distance of c. 700m. In this location, Turbine 10 is the closest and appears most prominently, while the remaining turbines within this array present with a comparable degree of prominence. The turbines within the southern array appear more distant, the perceived scale of the proposed turbines from nearest to furthest contributes to a sense of perspective.</p>	<p>Substantial-moderate / Negative / Long Term</p> <p>Not-Significant</p>

VP No.	Existing View	VP Sensitivity	Visual Impact Magnitude	Significance / Quality / Duration of Impact Statement of Significance
	<p>A coniferous forest is visible to the north-west. Longer range views are generally precluded by intervening vegetation.</p> <p>To the south, views are over an area of bog, interspersed with areas of scrub and woodland. A small structure is visible within this landscape in the foreground. Longer range views are generally precluded by intervening vegetation; however, glimpse views of distant upland areas are available. A wind energy development is visible along the horizon of these upland areas.</p> <p>This view is notable due to the naturalistic and scenic qualities of the landscape, which is part of a wildlife sanctuary.</p>		<p>To the north, the proposed turbines occupy a slight extent of the overall view, presenting in a condensed layout with a high degree of turbine overlap that contributes to a sense of visual clutter and discord. There is a degree of shortening of the turbines viewed behind the layers of intervening vegetation. However, this vegetation also creates a degree of visual separation between the viewer and the proposed turbines. The relative visual presence of the proposed turbines will be co-dominant due to their layout within the view and relative distance from the viewpoint.</p> <p>To the south, the proposed turbines occupy a large extent of the overall view and present at sizeable scale, presenting with a minor sense of overbearing as the most prominent built features within the view. The relative visual presence of the proposed turbines will be highly dominant due to their distance from the viewpoint.</p> <p>As tall, kinetic structures, the proposed turbines, particularly those within the southern array, would be very noticeable within this view and will detract from a sense of scenic amenity. While the visual presence of both arrays will be slightly moderated by intervening vegetation, the visual amenity of this scenic landscape will be notably impacted by this proposed development.</p>	

VP No.	Existing View	VP Sensitivity	Visual Impact Magnitude	Significance / Quality / Duration of Impact Statement of Significance
			On balance of the reasons outlined above, the magnitude of visual change is deemed to be High and of a Negative quality.	
VP28	<p>R689 at New Birmingham - This view is representative of those that would be experienced transiently along the R689 regional road, and those that would be experienced by residents to varying degrees (subject to intervening vegetation) along the regional road and within the local landscape.</p> <p>To the south-west, views towards the site are over the R689, bordered by fencing and walls. To either side of the road, sloping areas of pasture are visible, bordered by hedgerows and individual mature trees. Residential structures are visible throughout the mid-ground, surrounded by areas of dense vegetation.</p> <p>To the north-west, views towards the site are over a sloping area of pasture, bounded by fencing, sections hedgerow, stone walls, and the R689. Residential structures are visible along the R689 to the north, bounded by large stone walls and surrounded by some areas of vegetation.</p>	Medium	<p>To the south-west, two proposed turbines within the southern array are largely visible within the mid-ground at a distance of c. 2.9km. The remaining turbine within this array is partially visible, largely screened by a tree within the local landscape. To the north-west, one proposed turbine within the northern array is partially visible. The remaining proposed turbines within this array are screened by intervening structures. However, as can be seen in the Wireline Model, the proposed turbines within this array extend across the horizon. It is likely that some additional proposed turbines will be at least partially visible from other areas within the local landscape. In this location, while Turbine 11 is the closest, each array presents with a respective comparable degree of proximity.</p> <p>To the south-west, the visible proposed turbines within the southern array present in a relatively clear and legible manner, within a somewhat condensed layout that occupies a small extent of the overall view. There is a degree of shortening of the turbines viewed behind the layers of intervening vegetation and structures.</p>	<p>Moderate / Negative / Long Term</p> <p>Not-Significant</p>

VP No.	Existing View	VP Sensitivity	Visual Impact Magnitude	Significance / Quality / Duration of Impact Statement of Significance
	<p>In the background, views are over well-vegetated, expansive agricultural areas and areas of bog. In the distance, rolling layers of upland areas are visible.</p> <p>Views over this landscape are somewhat notable due to their extent.</p>		<p>However, these also create a degree of visual separation between the viewer and the proposed turbines.</p> <p>To the north-west, the visible proposed turbine, largely screened by intervening vegetation, occupy a slight extent of the overall view. The intervening vegetation and structures reduce its perceived prominence and influence on the view.</p> <p>As tall, kinetic structures, the proposed turbines, particularly those within the southern array, would noticeable within this view and will detract from a sense of rural amenity. The relative visual presence of the proposed turbines will be sub-dominant due to their partial screening, layout within the view, and relative distance from the viewpoint. However, the visual presence of the proposed turbines is somewhat moderated by intervening vegetation. This productive semi-rural landscape, influenced by anthropogenic land use, is able to accommodate the proposed turbines in terms of scale, extent, and function.</p> <p>On balance of the reasons outlined above, the magnitude of visual change is deemed to be Medium and of a Negative quality.</p>	

VP No.	Existing View	VP Sensitivity	Visual Impact Magnitude	Significance / Quality / Duration of Impact Statement of Significance
VP29	<p>Local road at Killeen - This view is representative of those that would be experienced by residents to varying degrees (subject to intervening vegetation) within the local landscape.</p> <p>Views towards the site are over a largely flat area of pasture, bounded and intersected by sections of scrub and hedgerow. Longer range views are generally precluded by layers of vegetation. However, some glimpse views over more distant upland areas are available.</p> <p>While there are pleasant aspects, views over this rural landscape are not particularly notable.</p>	Medium-low	<p>All proposed turbines within both arrays are largely visible within this view, with the southern array located at a distance of c. 1km. In this location, Turbine 11 is the closest and appears most prominently, while the remaining turbines within this array present with a comparable degree of prominence. The turbines within the southern array appear more distant, rising behind layers of vegetation in the background. The perceived scale of the proposed turbines from nearest to furthest contributes to a sense of perspective.</p> <p>The proposed turbines occupy a moderate extent of the overall view. From this orientation, the proposed turbines within the southern array present at a sizeable scale, though without a sense of overbearing. They are well-spaced across the view, presenting in a clear and legible manner. One of the proposed turbines within this array is partially screened by intervening vegetation, however this does not disrupt the overall legibility of the array. The relative visual presence of the proposed turbines will be dominant, due to their distance from the viewpoint.</p> <p>From this orientation, the proposed turbines within the northern array present within a somewhat condensed layout, with a degree of turbine overlap between two pairs of turbines that creates a minor sense of visual discord.</p>	<p>Substantial-moderate / Negative / Long Term</p> <p>Not-Significant</p>

VP No.	Existing View	VP Sensitivity	Visual Impact Magnitude	Significance / Quality / Duration of Impact Statement of Significance
			<p>There is a degree of shortening of the turbines viewed behind the layers of intervening vegetation. However, this vegetation also creates a degree of visual separation between the viewer and the proposed turbines. The relative visual presence of the proposed turbines will be sub-dominant due to their condensed layout within the view and relative distance from the viewpoint.</p> <p>As tall, kinetic structures, the proposed turbines, particularly those within the southern array, would be noticeable within this view and will detract from a sense of scenic amenity and will presence with a dominant visual presence. While the visual presence of both arrays will be slightly moderated by intervening vegetation, the visual amenity of this rural landscape will be impacted by this proposed development.</p> <p>On balance of the reasons outlined above, the magnitude of visual change is deemed to be High and of a Negative quality.</p>	
VP30	<p>Derrynaflan Church - This view is representative of those that would be experienced at Derrynaflan Church.</p> <p>Views towards the site are over sloping expanse of bog, interspersed with areas of scrub and woodland.</p>	High-medium	<p>All proposed turbines within the southern array are largely visible within this view, rising from within the mid-ground at a distance of c. 3.6km. Three proposed turbines within the northern array are largely visible, while the remainder are screened by intervening vegetation within the local landscape.</p>	

VP No.	Existing View	VP Sensitivity	Visual Impact Magnitude	Significance / Quality / Duration of Impact Statement of Significance
	<p>In the distance, views are over sloping upland areas, blanketed in blocks of coniferous forestry and pasture and scattered with residential and farmstead structures.</p> <p>Views over this landscape are notable due to the cultural and heritage significance of the church and the naturalistic and scenic qualities of the surrounding landscape.</p>		<p>However, as can be seen in the Wireline Model, the proposed turbines within this array are closely grouped along the horizon. It is likely that some additional proposed turbines will be at least partially visible from other areas within the local landscape. In this location, while Turbine 9 is the closest, each array presents with a respective comparable degree of proximity. The turbines within the southern array appear more distant, rising behind layers of vegetation in the background. The perceived scale of the proposed turbines from nearest to furthest contributes to a sense of perspective.</p> <p>The proposed turbines are well-spaced across the view, presenting in a clear and legible manner. The proposed turbines within the southern array are partially screened by intervening vegetation, however this does not disrupt the overall legibility of the array. The relative visual presence of the proposed turbines will be sub-dominant, due to their distance from the viewpoint.</p> <p>From this orientation, the proposed turbines within the northern array present within a condensed layout. There is a degree of shortening of the turbines viewed behind the layers of intervening vegetation. However, this vegetation also creates a degree of visual separation between the viewer and the proposed turbines.</p>	<p>Moderate / Negative / Long Term</p> <p>Not-Significant</p>

VP No.	Existing View	VP Sensitivity	Visual Impact Magnitude	Significance / Quality / Duration of Impact Statement of Significance
			<p>The relative visual presence of the proposed turbines will be minimal due to their condensed layout within the view and relative distance from the viewpoint.</p> <p>As tall, kinetic structures, the proposed turbines, particularly those within the southern array, would be noticeable within this view and will detract from a sense of rural amenity. The proposed turbines represent an increase in the intensity and extent of built development within this rural landscape. However, the broad, lateral extent of this productive landscape, influenced by agriculture and forestry, is able to accommodate the proposed turbines in terms of scale, extent, and function. In this regard, while noticeable, the proposed turbines are not considered to generate a sense of overbearing.</p> <p>On balance of the reasons outlined above, the magnitude of visual change is deemed to be Medium-low and of a Negative quality.</p>	
VP31	<p>R689 at Ballinunty - This view is representative of those that would be experienced transiently along the R689 regional road, and those that would be experienced by residents to varying degrees (subject to intervening vegetation) along the regional road and within the local landscape.</p>	Medium-low	<p>Fleeting views of the blade tips of three of the proposed turbines within the southern array would be possible at a distance of c. 2.5km (T11). The blades and hub of one proposed turbine within the northern array are also visible.</p> <p>From this orientation, the visible proposed turbines are largely screened by intervening vegetation and structures within the local landscape.</p>	<p>Moderate-slight / Negative / Long Term</p> <p>Not-Significant</p>

VP No.	Existing View	VP Sensitivity	Visual Impact Magnitude	Significance / Quality / Duration of Impact Statement of Significance
	<p>Views towards the site are over the intersection of the R689 and a local road. These roads are bordered by residential structures, bounded by low walls and sections of planted vegetation. Longer range views are generally precluded by intervening structures and vegetation. Powerlines and signage are visible throughout the view.</p> <p>Views over this settled landscape are not particularly notable.</p>		<p>While this reduces their perceived prominence and influence on this view, it also creates a minor degree of visual clutter and irritation.</p> <p>While the proposed turbines would be a noticeable visual element throughout the view, presenting with a minimal to co-dominant visual presence, it is not considered that they would generate a notable influence on views. This anthropogenic, settled landscape, with its density of screening vegetation, is able to accommodate the proposed turbines in terms of scale, extent, and function. The layers of intervening vegetation create a sense of separation from the visual receptor, as well as an ambiguity as to the location of the proposed turbines.</p> <p>From some areas within the wider landscape, there may be glimpse views of some additional blade tips or partial turbines, particularly those within the southern array given their relative distance. However, the screening effect of vegetation that is present within this view is likely to continue throughout the local landscape, and any additional visible proposed turbines would be at least partially screened.</p> <p>On balance of the reasons outlined above, the magnitude of visual change is deemed to be Medium-low and of a Negative quality.</p>	

VP No.	Existing View	VP Sensitivity	Visual Impact Magnitude	Significance / Quality / Duration of Impact Statement of Significance
VP32	<p>Local road at Killenaule - This view is representative of those that would be experienced by residents to varying degrees (subject to intervening vegetation) within and around Killenaule.</p> <p>Views towards the site are over a sloping area of pasture, bounded by fencing and walls. In the mid-ground and background, views are over a rolling agricultural area, bounded by a network of hedgerows and mature trees. Residential and farmstead structures are visible throughout the landscape, and blocks of coniferous forestry are visible along the hills. Glimpse views of distant elevated areas are available.</p> <p>Views over this semi-rural landscape are somewhat notable due to their naturalistic and scenic qualities and the association with a settlement.</p>	Medium	<p>Fleeting views of the blade tips of one of the proposed turbines within the southern array would be possible at a distance of c. 4.6km (T11). The blades and hub of one proposed turbine within the northern array are also visible.</p> <p>From this orientation, the visible proposed turbines are largely screened by intervening vegetation and topography within both the local and wider landscape. While this reduces their perceived prominence and influence on this view, it also creates a minor degree of visual clutter and irritation.</p> <p>While the proposed turbines would be a noticeable visual element throughout the view, presenting with a minimal visual presence, it is not considered that they would generate a notable influence on views, nor notably detract from any sense of visual amenity. The layers of intervening vegetation create a sense of separation from the visual receptor, as well as an ambiguity as to the location of the proposed turbines.</p> <p>From some areas within the wider landscape, there may be glimpse views of some additional blade tips or partial turbines. However, this would likely have no additional bearing on visual amenity, as the screening effect of vegetation that is present within this view is likely to continue throughout the local landscape.</p>	<p>Slight / Negative / Long Term</p> <p>Not-Significant</p>

VP No.	Existing View	VP Sensitivity	Visual Impact Magnitude	Significance / Quality / Duration of Impact Statement of Significance
			On balance of the reasons outlined above, the magnitude of visual change is deemed to be Low and of a Negative quality.	
VP33	<p>Rock of Cashel - This view is representative of those experienced at the Rock of Cashel, and those that would be experienced by residents to varying degrees (subject to intervening vegetation) within and around Cashel.</p> <p>Views towards the site are over a stone wall bordering the Rock of Cashel. Beyond this, views are over a largely flat agricultural landscape, bounded and intersected by a network of hedgerows and areas of woodland. More elevated agricultural areas are visible to the north-east. Regional and local roads are visible throughout this landscape. In the distance, views are over an upland area.</p> <p>Views over this largely rural landscape are very notable, as they are associated with a nationally significant cultural and heritage site.</p>	Very High	<p>Due to intervening terrain, views of the proposed turbines from this location at a distance of c. 17.2km (T11) would be precluded.</p> <p>This screening effect is likely to continue throughout the immediate landscape.</p> <p>On balance of the reasons outlined above, the magnitude of visual change is deemed to be Negligible and of a Neutral quality.</p>	<p>Imperceptible / Neutral / Long Term</p> <p>Not-Significant</p>

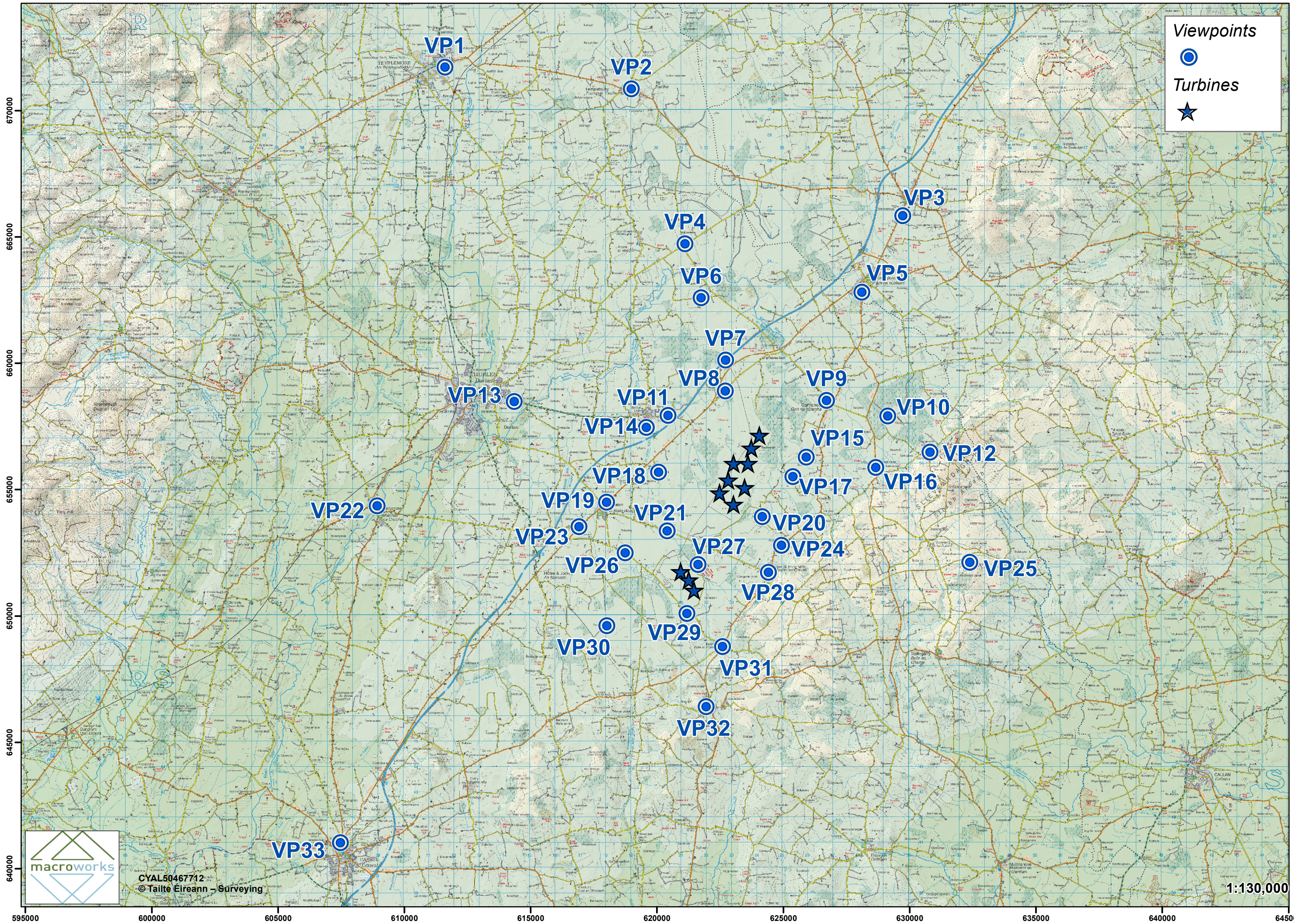
APPENDIX 13.2

Mapping (Zone of Theoretical Visibility Mapping
and Representative Viewpoint Mapping)

APPENDIX 13.2a

VP Location Maps

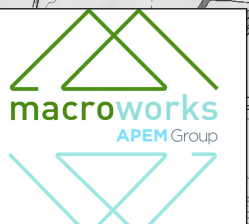
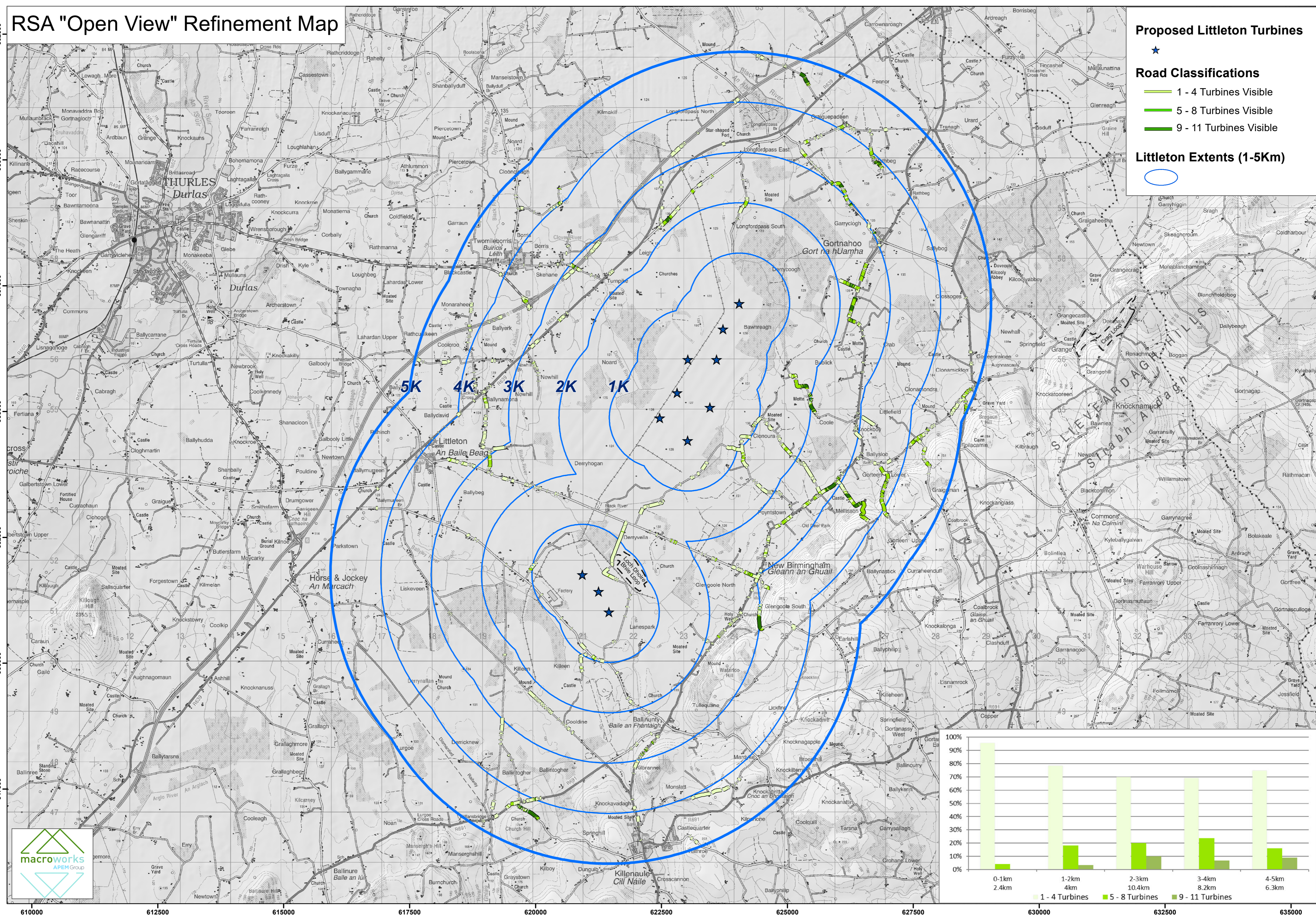
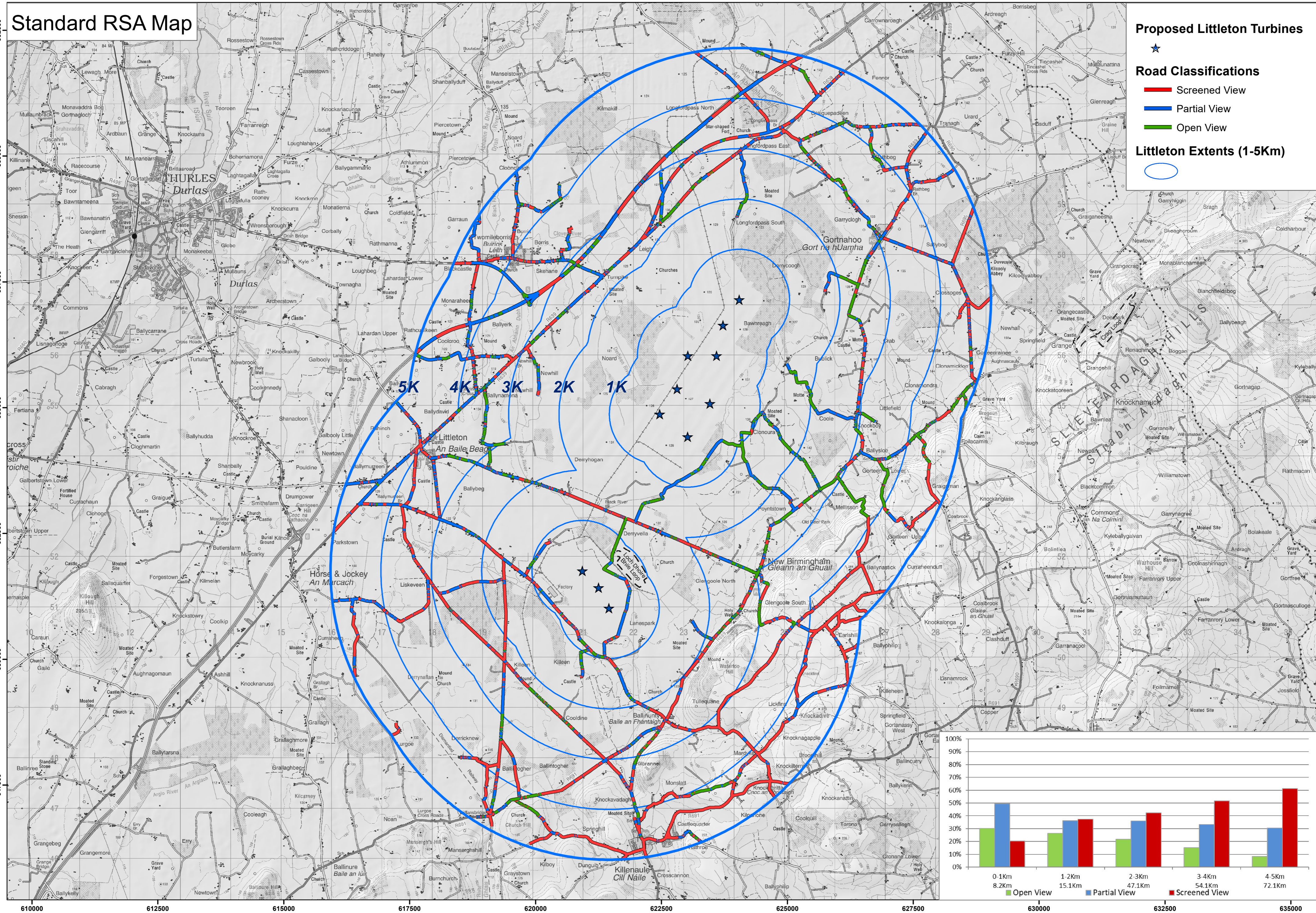
Viewpoint locations selected for the Littleton Wind Farm project



APPENDIX 13.2b

RSA Screening Classification

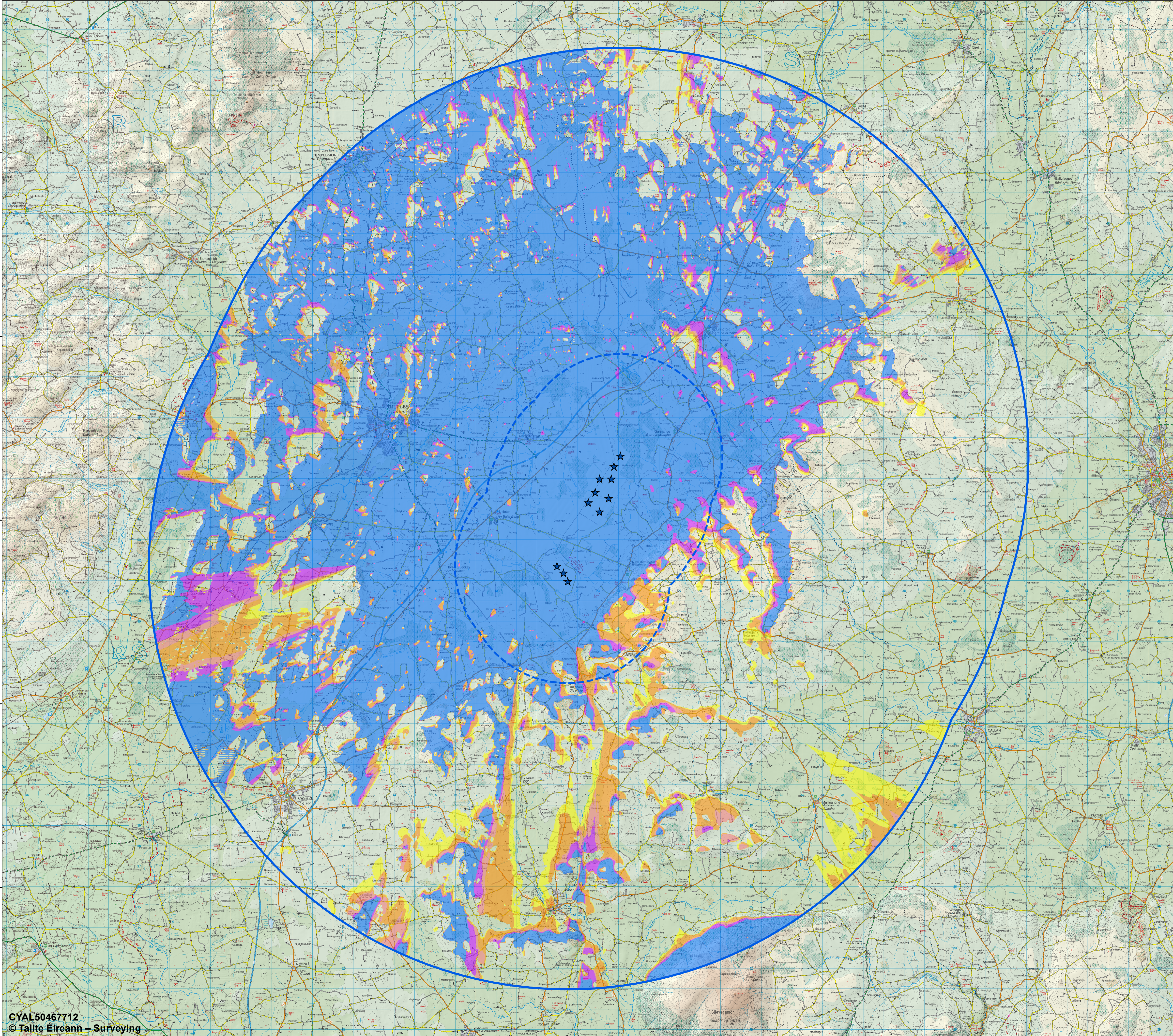
Route Screening Assessment (RSA) - Screening Classification



APPENDIX 13.2c

ZTV Potential Views of Turbines

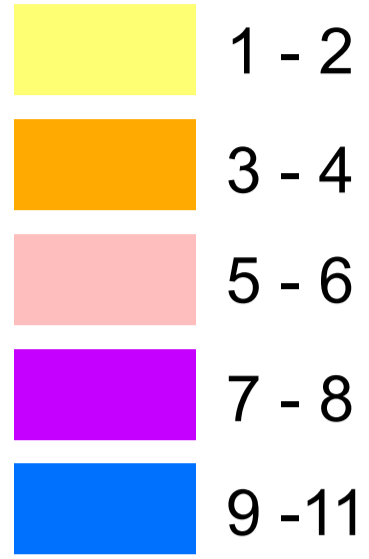
ZTV (Zone of Theoretical Visibility) indicating the areas that have a potential view of the proposed turbines at Littleton Wind Farm (Tip Height 200m)



Proposed Turbines



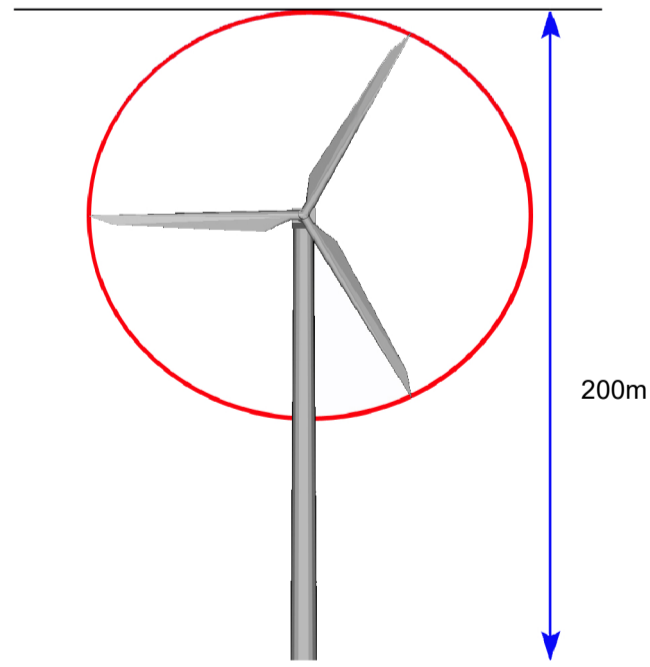
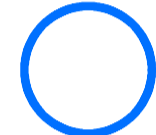
No. Turbines Visible



5km Central Study area



20km Study area



This ZTV map is based on the potential to see any part of the proposed turbine/s from the tip to base in a theoretical bare-ground scenario i.e. without accounting for screening by vegetation and/or buildings.

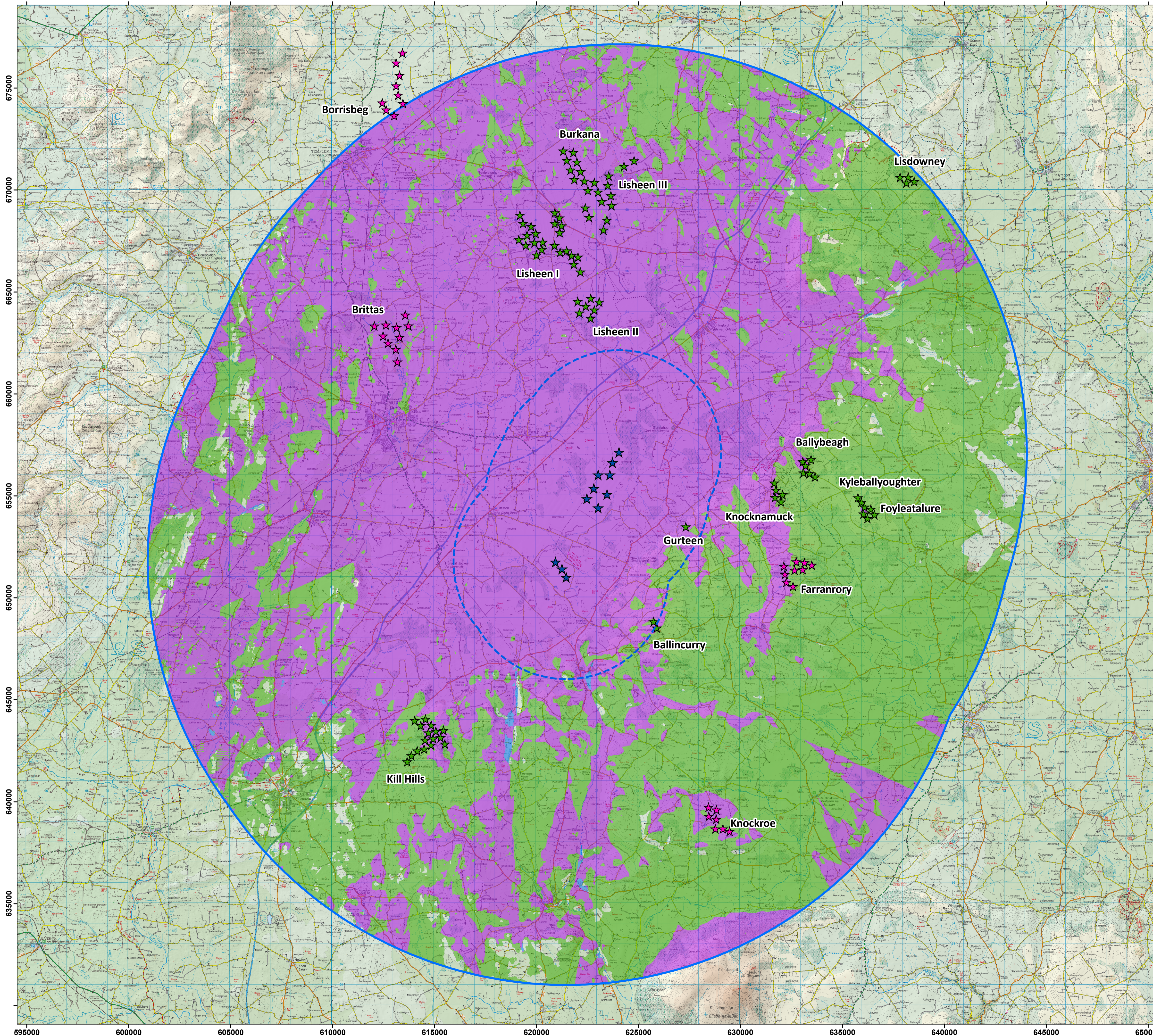
Observer Height assumed: 1.7m to eye-level height
Tip Height: 200m

Scale: 1:91,184 if printed @ A1 size

APPENDIX 13.2d

ZTV Cumulative Existing

ZTV indicating the cumulative theoretical visibility of the proposed Littleton Wind Farm in combination with existing cumulative scenario



Proposed Turbines



Existing Turbines



Permitted Turbines



Wind Farm Visibility

40.8% Visibility of existing and/or permitted turbines only

56.6% Visibility of proposed turbines as well as existing and/or permitted turbines

0.2% Visibility of proposed turbines only

2.4% of the entire study area to 20km will not have any view of the turbine blades of the proposed Wind Farm or that of any existing or permitted wind farms

5km Study area



20km Study area



This ZTV map has been calculated such that a turbine registers as been theoretically visible to observers in the surrounding landscape once there is an unobstructed line of sight to its blade tip.

Observer Height assumed: 2m to eye-level height
Blade Tip Heights: Variable

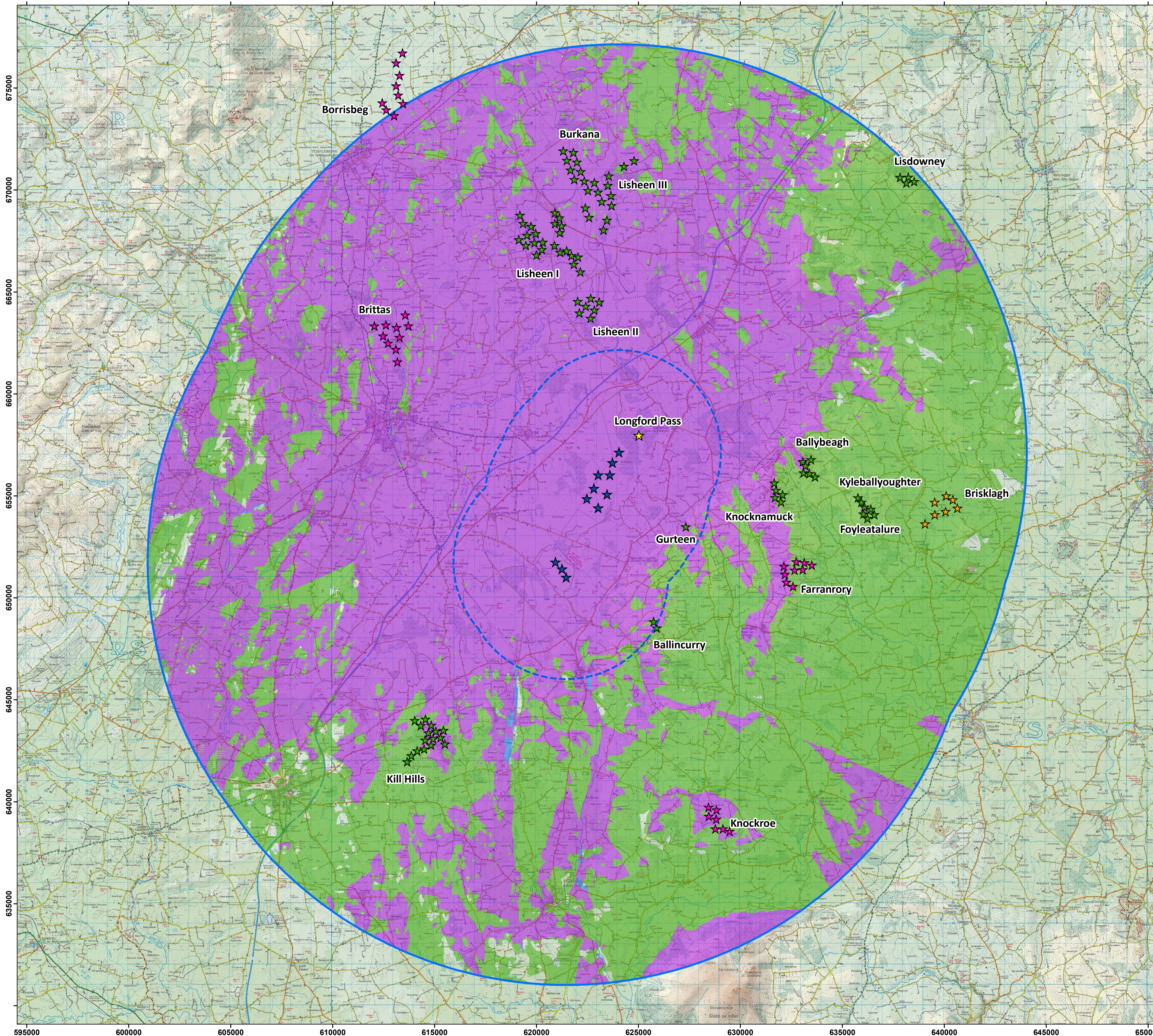
Note: This ZTV map is calculated for landform screening only and does not take account of the significant screening effects of vegetation (hedgerows, trees) and buildings inherent across the study area.

Scale: 1 : 90,000 if printed @ A1 size

APPENDIX 13.2e

Cumulative Potential Future

ZTV indicating the cumulative theoretical visibility of the proposed Littleton Wind Farm in combination with the potential future cumulative scenario



Proposed Turbines



Existing Turbines



Permitted Turbines



In-Planning Turbines



Pre-Planning Wind Farm Location



Wind Farm Visibility

41.5% Visibility of existing, permitted or in-planning turbines only

56.6% Visibility of proposed turbines as well as existing, permitted or in-planning turbines

0.1% Visibility of proposed turbines only

1.8% of the entire study area to 20km will not have any view of the turbine blades of the proposed Wind Farm or that of any existing, permitted or in-planning turbines only

5km Study area



20km Study area



This ZTV map has been calculated such that a turbine registers as been theoretically visible to observers in the surrounding landscape once there is an unobstructed line of sight to its blade tip.

Observer Height assumed: 2m to eye-level height
Blade Tip Heights: Variable

Note: This ZTV map is calculated for landform screening only and does not take account of the significant screening effects of vegetation (hedgerows, trees) and buildings inherent across the study area.

Scale: 1 : 90,000 if printed @ A1 size